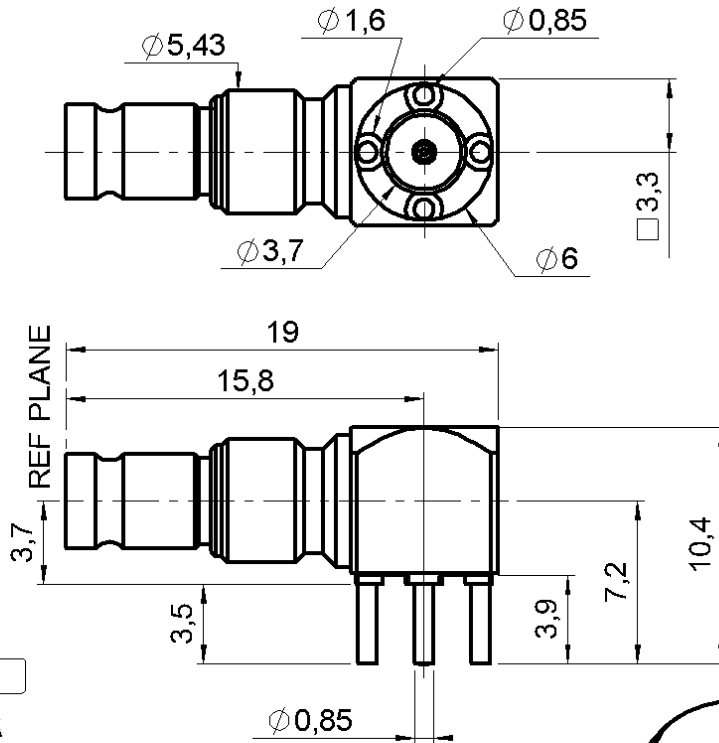


RIGHT ANGLE JACK RECEPTACLE FOR PCB

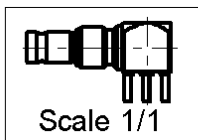
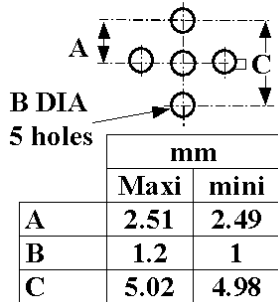
R118.680.215

SOLDER LEGS

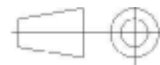
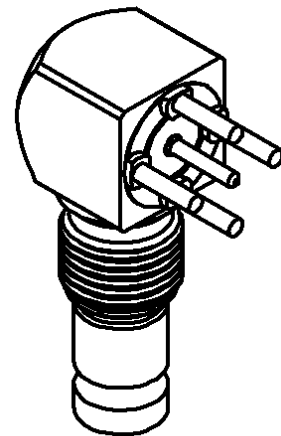
Series : V1.0-2.3



PANEL CUT OUT



All dimensions are in mm.



COMPONENTS

MATERIALS

PLATINGS (µm)

BODY
CENTER CONTACT
OUTER CONTACT
INSULATOR
GASKET
OTHERS PARTS
 .
 .

BRASS
BERYLLIUM COPPER
 -
PTFE
 -
 -
BRASS
 .
 .

TIN 5 OVER NICKEL 2
GOLD 1.3 OVER NICKEL 2
 -
 -
GOLD 2.5 OVER NICKEL 2
 .
 .

Issue : 0516 B

In the effort to improve our products, we reserve the right to make changes judged to be necessary.



**RIGHT ANGLE JACK RECEPTACLE FOR PCB
SOLDER LEGS**

R118.680.215

Series : V1.0-2.3

PACKAGING

SPECIFICATION

Standard	Unit	Other
1	-	Contact us

ELECTRICAL CHARACTERISTICS

ENVIRONMENTAL

Impedance		50 Ω
Frequency		0-4 GHz
VSWR	NA +	0.000 x F(GHz) Maxi
Insertion loss		NA √F(GHz) dB Maxi
RF leakage	- (NA - F(GHz)) dB Maxi
Voltage rating		350 Veff Maxi
Dielectric withstanding voltage		1000 Veff mini
Insulation resistance		5000 MΩ mini

Operating temperature	-55/+155 ° C
Hermetic seal	NA Atm.cm3/s
Panel leakage	NA

OTHERS CHARACTERISTICS

Assembly instruction

Others :

MECHANICAL CHARACTERISTICS

Center contact retention		
Axial force – Mating end	30	N mini
Axial force – Opposite end	30	N mini
Torque	NA	N.cm mini
Recommended torque		
Mating	NA	N.cm
Panel nut	NA	N.cm
Mating life	500	Cycles mini
Weight	2.971	g

Issue : 0516 B

In the effort to improve our products, we reserve the right to make changes judged to be necessary.

